



Chit Chat

Parish Newsletter for the
residents of Chitterne, Wiltshire
No.129 August 2017

Editor: Lindsay Lucas, Chapel Cottage, 01985 850058 - chitchat.39@gmail.com

As a result of the recent Parish Council Elections the Parish Council consists of Barry Ricketts (Chair), Murray Kent (Vice), Paul Pike, Pete Emmerson, Dorit Albertson, Charles Horsfall, Rachel Wilkinson & Emma Webb. With a new Chair in position it seemed a good time to ask a few questions.

Q. What is the Parish Council for?

The Parish Council is our link to the resources of local government. Its task is to maintain the fabric of the village and to provide particular facilities, such as allotments. The village hall is managed by the trustees who form the Village Hall Committee, we work closely together but the Parish Council is not responsible for the Hall.

Q. What do you actually do?

We meet bimonthly to progress various priority issues. Currently, these are: traffic, relations with external bodies (Wiltshire Council and its various committees, the police, other villages etc.); allotment matters; cricket club and the sports field; flooding and the maintenance of the 'Cut'; village hall liaison, footpaths, the maintenance work carried out by the Parish Steward, playground upkeep and a variety of other matters which may arise from time to time and are dealt with under 'Any Other Business'. Each of these areas is the responsibility of a Councillor, who reports on the action he or she has taken, or wishes to propose.

All villagers are welcome to participate in our meetings, and we frequently have representatives from the Police and Wiltshire Council. Recently, we have successfully arranged for the speed limit to be reduced to 20mph in the narrow part of Townsend (thanks to my predecessor, Mike Lucas). We are in the process of acquiring 3 sets of Speed Indication Devices to be located at strategic points in the village - and we are all grateful to Jack Harley of Harley Farms for his very generous donation which has made this possible. We have established a Flood Control Centre extensively equipped with pumps, signage, sandbags and a sandbag filler, generator and lights to avoid the worst of the damage caused by the last floods in 2011/12 and 2013. We are currently looking into the health of the trees bordering the Cut, many of which look to be in a dangerous state. We have also installed a defibrillator at the Village Hall that we hope will never be required. A longer term project is the installation of modern sewage treatment facilities in the Village Hall.

Q. How do you see the role of Chairman?

Essentially, working with the Parish Clerk (a key role) to ensure the programme is carried forward. Otherwise, I am no different to any other member of the Council. I simply had the time to do the job - most of our other Councillors are in full-time work. Also, I seem to be able to find, cajole or extort funds from all sorts of bodies and generous individuals, and the village constantly needs expenditure in order to carry out necessary improvements, without the full burden of expenditure falling upon villagers.

Q. Can anyone be a Parish Councillor?

So long as you have been in the village for a year, you can apply for election as a Parish Councillor. We also have co-opted members, who may not have been elected, but who bring particular skills and are keen to serve. Currently, we have five men and three women Councillors, not including the Clerk and myself. Believe me, there is plenty of work for all of us, and new applicants are always welcome.

CHURCH SERVICES in AUGUST

Sunday 6 th Trinity 8	9am HC (CW) Orcheston 1030 Family Communion Tilshead 5pm Bible Study & Prayers Chitterne	Sally Jammes
Sunday 13 th Trinity 9	9am HC (BCP) Shrewton 1030 HC (CW) Chitterne 6pm Evensong (BCP) Tilshead	Jane Harley
Sunday 20 th Trinity 10	9am Morning Prayer Orcheston 10.30 HC (CW) Shrewton 6pm HC (BCP) Tilshead	Jane Harley
Sunday 27 th Trinity 11	9am HC (BCP) Chitterne 1030 HC (CW) Orcheston 6pm Service of Peace Rollestone	Virginia Pryor

Should anyone wish to contact the Rector, The Rev Eleanor Rance, please phone 01980 620580

ARMY ACTIVITIES

TRAINING

In the first week of August, light role infantry units will be conducting low level dry training across the Plain. The middle two weeks of the month will consist mainly of army cadet force training. Cadets from Somerset ACF, Cornwall ACF and the City of London ACF will be conducting their annual camps on the Plain over this period. Armoured manoeuvre training will start again on 12th August with elements of the 1st Battalion The Scots Guards deploying on the Plain. The last week in August is particular quiet with only 1st Battalion The Royal Regiment of Fusiliers on the Plain.

The roads into Imber village will be open from 1800 hours on Friday 25 August until 0800 hours on Tuesday 29 August. The public are reminded that access is restricted to the carriageways only and, with the exception of St Giles Church, there is no access to the buildings in Imber village which will be being used by the military for training. It is the responsibility of the public to ensure that their vehicles (including cycles) are properly lit at night and in poor visibility when using the Imber roads, and that the 30 mph speed limit is strictly adhered to.

RANGE FIRES

Range Fires become a problem in dry weather and may endanger plantations, buildings and standing crops if there are strong winds, and can cause excessive smoke. On Salisbury Plain the MoD put in a vast amount of fail safes to ensure surrounding communities are safe and do not endure too much nuisance as a result of the military training that is conducted throughout the year. In order to prevent and control range fires occurring the following measures are in force:

- 5 day weather forecast in order to mitigate the future effects of the prevailing weather.
- A grazing programme agreed with local farmers in order to keep the grass short during the summer months;
- Control of firing incendiary ammunitions during extreme dry conditions;
- A fire watch scheme in order to ensure fires are constantly monitored.

Salisbury Plain Training Area Headquarters strives to meet the military needs for realistic training whilst at the same time endeavouring to take into full account public concerns. We will continue to do so.

LARKHILL RANGES

The permissive Byway that runs West from C Crossing on the A345 to the South East of Larkhill Racecourse will be sign posted as closed to members of the public from mid July to 23 Oct 17.

Note - Dates may change if operational training needs dictate.

BYELAW GOVERNANCE - ANTISOCIAL BEHAVIOUR

Parish members are encouraged to report all illegal activity on Salisbury to the Wiltshire Police. If serious crime is experienced the 999 should be dialled, and for all other reports including: illegal off-roading, illegal motor biking, drone use, poaching, hare coursing, petty theft, camping on MoD land, kite flying, please call 101 and list the call as 'antisocial behaviour' and a Byelaw violation. **Once reported please inform Range control on the Plainwatch number: 01980 674700 or email PLAINWATCH@landmarc.mod.uk.**

WELCOME

For any new people who have moved into the village recently, may I extend a huge welcome on behalf of us all. One of the best bits of advice we were given when we arrived was to go to everything once and then decide which we would like to do again! Sound advice as it turned out.

We have an excellent email system which keeps us up to date with day to day life in the village. If you wish to be included in this, please contact Pete (aka Hawthorn Pete) at jp_monte@btinternet.com

Just to let everyone know that Eleanor has sent us a post card thanking us all for the events during the Flower Festival weekend, which I will pin up on the Church notice board for those who wish to read it.



Beccy Parker



News from the King's Head

What a nice mix of weather for July; another month gone

by though!

As so many people know, the pub has been sold for 7 months but just before exchange and completion Paul & Paula Foote pulled out of the deal with no reason. The good news is that there has been a lot of interest since it came back on the market, so I will let you know of any developments.

Quiz Nights and Dart Nights will continue as normal, with the next quiz being on the 4th August.

Hope to see you soon.

Kenton

WANTED



Puppy walker/sitter wanted for 1/2 days per week (weekdays)

Flexible hours and days

Please call or email Louise for more details: 850438 or 07791733157

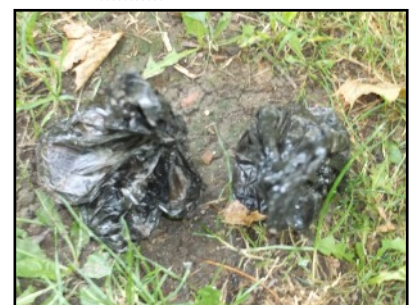
louiseandrews88@aol.co.uk

We have recently moved into Elm Farm

There Isn't a "Poo Fairy" in Chitterne!

Like most Chitterne dog owners I pick up my dogs' offerings, not only theirs but those left by less responsible owners dogs in the middle of tracks and roads.

Coming out of The Stables drive recently, I found two black parcels just outside the entrance. That really takes the.....!



Lilian

Farming News by Murray Kent

Our Hidden Gem

The other day I was fortunate enough to attend a college reunion hosted by a fellow student whose adult life has been very successful. He started an agricultural merchants business specialising in seeds for the more obscure crops grown here in the UK and in 2001 he diversified his business interests by purchasing Warminster Maltings and this is where we held our reunion and my story begins.



Warminster sits on the western edge of a band of soil type called The Icknield Series. Starting out on the East Yorkshire/Lincolnshire coast it runs down through Norfolk and Suffolk heading into the Thames Valley. This is the home of the Chiltern Hills where I used to farm on soil much the same as the soil we see around here. At the juncture it splits and travels across the top and bottom of the South Downs into Hampshire and Wiltshire before ending up on the Dorset coast.

The soil type is a light free draining and easy working soil which is ideally suited to the establishment of barley crops especially those whose characteristics lean towards the production of malt. Malting barley is judged on low nitrogen grain and the Icknield Series soil is what an East Anglian high yielding wheat grower would classify as "poor". Fortunately this is just what the Maltsters were looking for and 150 years ago the growers and Maltsters recognised this fact. Warminster became one of the "capitals" of malting and at its peak there were 36 malt houses in the town that generated the largest malt trade of any other West Country town.

For the next 100 or so years malt production flourished but as businesses grew and expanded others fell by the wayside until there were just 2. Then in 1968 the Market Place Maltings closed, you can still see the building in Chinns Walk today, leaving Pound Street to hold the fort. Pound Street had been producing Malt under the guise of E S Beaven (Maltings) Ltd. More on the Beaven family next month. This company was wholly owned by Arthur Guinness and up in 1994 the production was underwritten by the growing global expansion of Guinness stout. Then on May 20th 1994 the Warminster Journal headline read "Guinness Pull the Plug on Warminster Maltings". The freehold of the Maltings still remained in the hands of the Beaven family. One man who had worked there from leaving school was not going to roll over though. He managed to negotiate a supply contract to Guinness and restart the business as a seller of malt, abandoned by the Beaven family 80 years previously. In 2001 Robin Appel stepped in to inject the necessary cash to maintain the business by purchasing the Warminster Maltings "lock stock and barrel". This included Grade 2 star listed premises in Pound Street that since 2001 have been repaired and restored to a very high standard; a work force dedicated to producing top quality malt for the brewery trade and a customer base from which to expand. Of course the spring barley we see growing all around us in Chitterne is the very barley that Maltsters like Warminster Maltings need from the Icknield Series soils. More detail on this unique, well one of 4, "floor" Maltings left in the country next time.

Warminster Maltings conduct guided tours of the Maltings. The visit lasts about 1 ½ hours and is very interesting. They are still producing malt in exactly the same method as Victorian times. It ends with a buffet super and tasting of beers produced from the malt. Cost is £15.00 per head. If anyone is interested please contact Murray on 01985 851785 or drop him an email at mistermuzzamurray@gmail.com . 15 to 30 attendees on a first come first served basis. If there is a good uptake I will lay on a coach from Codford. Looking at a date in mid September which will be confirmed if enough interest.

Thanks for that Murray. I knew of it but hadn't appreciated the history behind it all. I think a 'little outing' would be fun! Editor

IMBERBUS SERVICE on SATURDAY 26TH AUGUST



In 2009, a group of bus industry professionals achieve a long standing ambition to run a vintage bus service from Warminster to the abandoned village of Imber. This has now become an annual and takes you across Salisbury Plain to parts rarely seen.

This year there will be departures at least every 15 minutes from Warminster Station to Imber from 9.45am onwards. Buses will serve Tilshead, Chitterne, West Lavington, Market Lavington, New Zealand Farm Camp and Brazen Bottom at least once per hour; with extra journeys during the afternoon. The buses will consist of at least 16 old and new Routemasters. Many journeys will be operated by at least 2 vehicles, some of which will be wheelchair accessible, so if you have mobility problems, please email us so that we can tell you which journeys we are planning to use the low floor buses on.

As usual, all buses will connect at our interchange point at Gore Cross so that passengers can easily travel to/from all points on our network. To enable you to do this in an affordable way, we offer an **all-day ticket at a cost of £10 per adult, with up to 3 children being allowed to accompany each adult for the bargain fare of just £1 each.** However, ordinary bus fares will also be available and so if you just wish to travel from Warminster to visit the 16th century St Giles' Church at Imber (which will be open especially on this date), you can purchase an ordinary single ticket for just £2 each way.

Imberbus operates as an ordinary local bus service, so there is **no need to pre-book** or pay in advance - just turn up and pay the conductor on the bus in cash (payment in £5 or £10 notes or £1 coins would be appreciated!). To speed things up we will also have staff selling day tickets outside Warminster Station, but **please note that unfortunately we cannot accept credit/debit/contactless cards or concessionary bus passes.**

The bus calls at Chitterne (outside the hall) and you can hop on, pay your fare and have a very interesting journey. The timetable can be viewed on the notice board at the Village Hall.

Refreshments are available in our Village Hall from 1030 onwards - tea, coffee, sandwiches and of course our famous home made cakes - you don't have to be going on the bus to come and have some refreshments. A fun day out for all the family.

AUGUST DATES FOR YOUR DIARY

DARTS

King's Head

Tuesday evenings

8pm for 8.30pm start



HOUSEHOLD WASTE DATES

Thursday 3rd, 17th, 31st August

CALLING ALL CHILDREN

FUN IN THE SUN



Friday 28th July,

4th, 11th & 18th
August

Wylve Valley Primary School,
Codford

This is a free activity programme for 5-11 year olds, aimed at providing high quality sports coaching during the summer holidays for young people in rural locations across the county. Sports provided may change on a week by week basis but will include tag rugby, cricket, football, dodgeball, tennis, rounders, athletics and team activities.

For more information about the Fun in the Sun programme, please email sportsdevelopment@wiltshire.gov.uk or call 01722 434437. Please bring a hat, water bottle and suncream. Wet weather provision may be available but please bring along a waterproof coat.



QUIZ NIGHTS

King's Head Pub

4th, 18th August &
1st September

8pm for 8.30pm start

Winning team receives a £20
voucher to spend on drinks

This is a real fun night & no one
takes it too seriously!

There is a relatively new team
setting the next quiz, so come
along & find out what they have
conjured up for us all!



CRICKET CLUB

Sunday 6th

Oxymorons

&

Sunday 13th

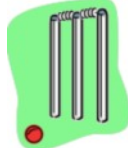
Michael Horsfall XI

&

Sunday 27th

Stranded Whales

All with a 2pm start on the
Sports Field



GREEN BIN DATES

Monday 7th & 21st



BLACK BOX & BLUE BIN DATES

Thursday 10th & 24th



Breakfast Club

Saturday 12th

0930 - 1130

Village Hall

PLEASE NOTE DATE

Come along for a bacon butty, toast,
an egg butty, or even an egg & bacon
butty, and a mug of tea or coffee.
Other goodies may be on offer if
the village 'Mary Berry' has had
time!

If you are new to the village, this is
a great place to meet your
neighbours and catch up with what
is happening.

Chit Chat next issue

All contributions for the September
issue by **Tuesday 22nd August** by
hand or email to:
chitchat.39@gmail.com

To download Chit Chat from the village
website: www.chitterne.com click on
the Village Life link on the home page,
then click on Newsletters and the
monthly issue you want.

STITCHING GROUP

Village Hall

Friday 18th August at
1030



This is a friendly group of ladies who
have a common love of stitching but
are equally happy to have a coffee and
a chat.

LIBRARY VAN

The next date is **Friday
18th**. The van parks
outside the Village Hall
from 1140 - 1200.

For those of you who are
new to the village, this is a
great facility. There are books for
everyone, including children.

There is a lift for those of us who
may find stairs a bit of a problem and
a hearing loop.



Imber Bus Day



Sunday 26th August

BANK HOLIDAY MONDAY

King's Head open at lunch time

VILLAGE PICNIC

Sunday 3rd September

12 noon

Sports Field

Bring a picnic & have a bit of fun before
the children go back to school. Music
by DJ Farmer.



HARVEST LUNCH

Sunday 10th
September

More details next month